

O2 Mobile Broadband for Windows 7 users

If you're using Windows 7, follow the instructions below to install your Connection Manager software. This software will manage your mobile broadband and all other internet connections.

For more information on using O2 Mobile Broadband, read the full mobile broadband user guide included in the box with your dongle.


IMPORTANT:
You need to uninstall your current Connection Manager software before installing the new version.

If this is the first time you've used O2 Mobile Broadband, go to step number 8 on page 3.

If you've already used O2 Mobile Broadband, read on.

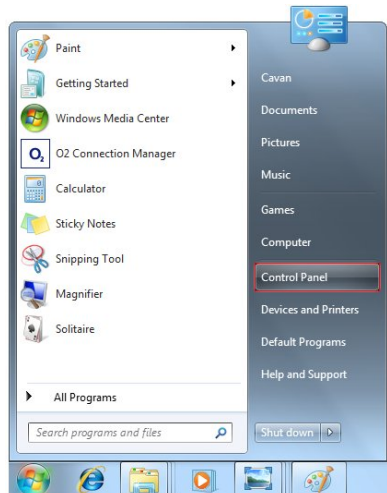
Existing O2 Mobile Broadband customers

You need to uninstall your current version of Connection Manager before installing your new Connection Manager software. Here's how.

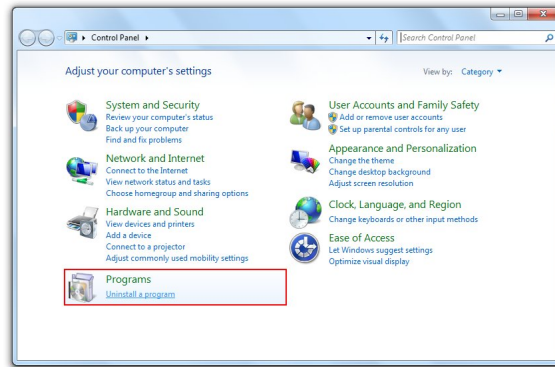
1. Click the  on the top right of Connection Manager to exit Connection Manager.



2. Click **Start**, then **Control Panel**.



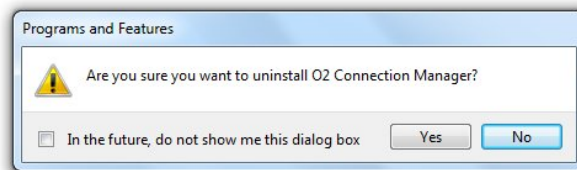
3. Click **Uninstall a program**. You'll find it under **Programs**.



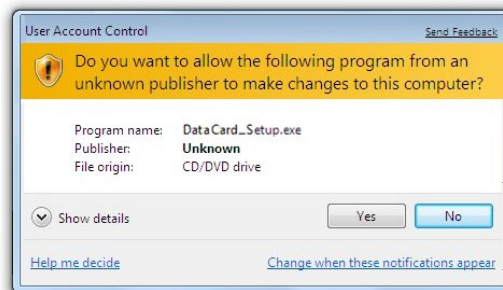
4. Right click **O2 Connection Manager**, then click **Uninstall**.



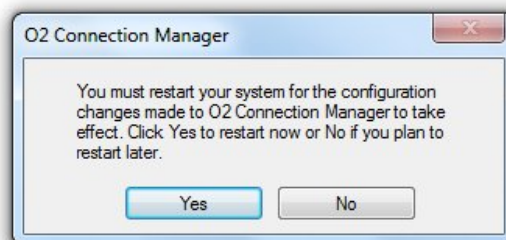
5. Click **Yes**.



6. Click **Yes**.



7. You now need to restart your PC, click **Yes**.



Existing O2 Mobile Broadband customers – you've now finished uninstalling your old version of Connection Manager. Follow the instructions below to install the new version.

New O2 Mobile Broadband customers - follow the instructions from here.

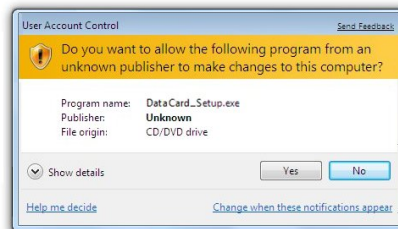
- Put the CD into your PC. When the AutoPlay window pops up, click **Run**. This pop up may take a few minutes to appear.

Tip: If this doesn't appear automatically, start O2 Connection Manager manually by going to **Start > Computer > O2 ConnectionMan**.

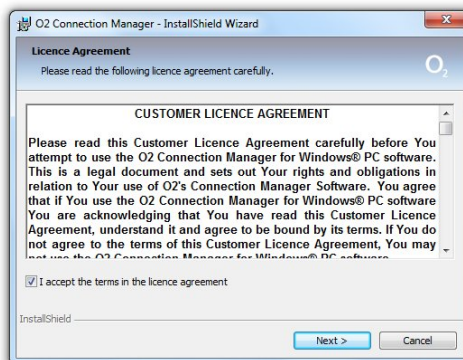


If you have downloaded the software from the web site, double click on the application.

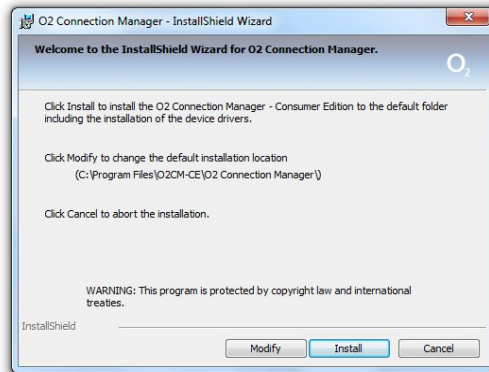
- If the User Account Control pop up appears, click **Yes**.



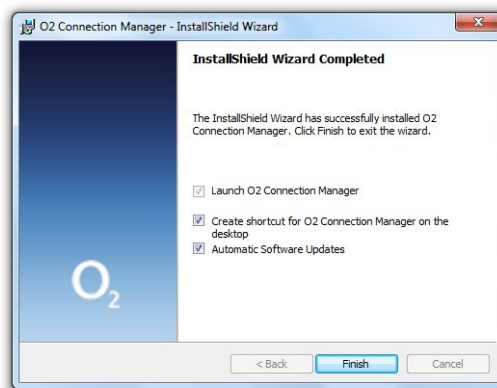
- Read the agreement. If you accept, tick the **Accept** box. Click **Next**.



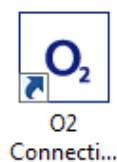
11. Click **Install**. This may take a few minutes.



12. Once the installation is finished the following pop up will appear, click **Finish**.



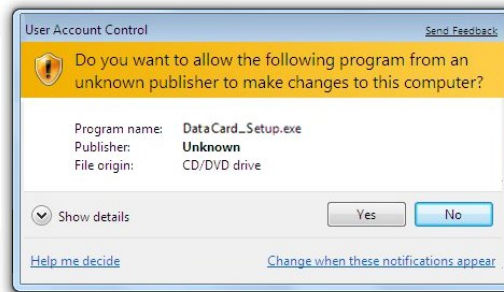
13. Double click the **Connection Manager** icon on your desktop.




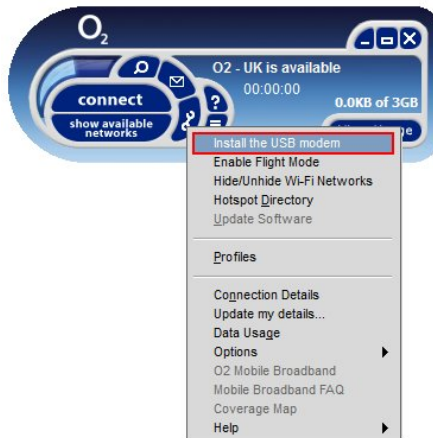
14. The following Connection Manager screen will appear. Enter your details and click **Continue**.

Note: Don't insert your dongle until you're asked to.

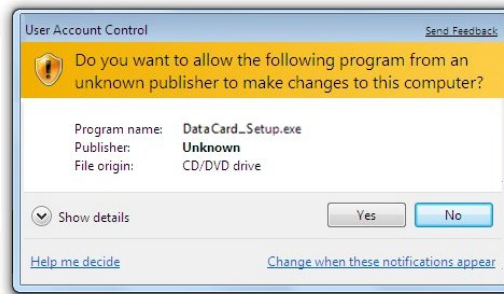
15. If the User Account Control pop up appears, click **Yes**.



16. Click the tools icon  then click **Install the USB Modem**.



17. The User Account Control screen might appear. If it does, click **Yes**.



18. After the modem drivers are installed, a pop up will tell you to insert your USB modem. **Insert your modem first**, then click **OK**.



Your device driver software will now start installing. You'll see the following message on the bottom right hand side of your screen.



Once the installation process has finished, you'll see the following message on the bottom right hand side of your screen..



19. The AutoPlay window might pop up. If it does, click **Run AUTORUN.EXE**.



You can now connect to the internet. For more information read your full mobile broadband user guide.